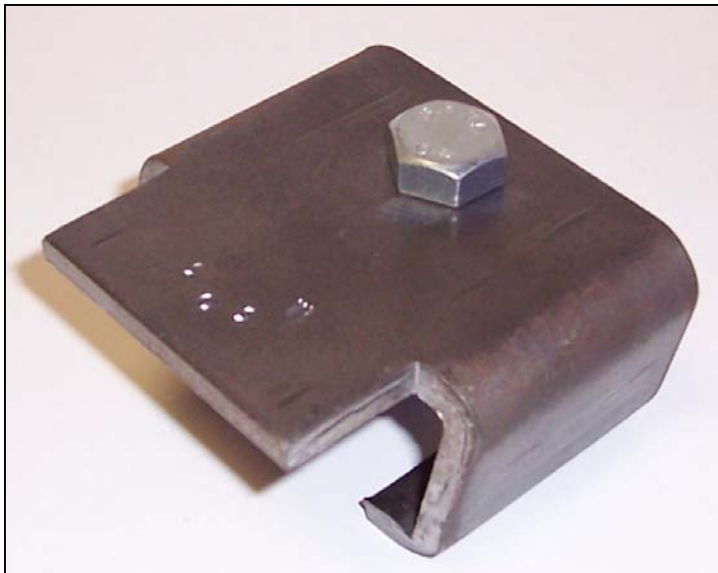


Flange-Lok[®]

Flange-Lok[®] is a heavy-duty single-piece stamping for suspending 3, 4 or 5 inch refractory roof support beams from structural supports.

The M300 series metallic is rotated onto the junior I-beam and is easily positioned against the flange of the support beam. The position of the M303 (for 3" I-beam) is secured by hand tightening the nut; the weight of the suspended refractory roof locks it in place.



Building a new furnace?
Rebuilding your present
furnace roof?

Contact Merkle Engineers -
our M300 Flange-Lok
series is a simple, fast way
to put up refractory roof
support steel.